



**PRESS RELEASE No. 5729**

April 2007

Press contact: **Tom Moriarty**

Tel: 01442 843 000

[tom@thomas-moriarty.com](mailto:tom@thomas-moriarty.com)

## **Newly-developed software transforms CNC control**

**Water Jet Sweden announce the introduction of a newly-developed software system which they claim transforms operational management via the CNC to higher levels never hitherto imagined to be possible. Called "Edgecut", it incorporates a host of features including: real-time three-dimensional screen viewing, job management, built-in multipart capabilities, live updates of alarms and operational messages, all with direct feedback from the machine.**

### **Leading edge know-how**

"The Edgecut project could not have been a success", says Water Jet Sweden AB's managing director, Lennart Svensson, "without the leading edge know-how we have of the industry allied to the professional competence of our engineering team". The result is an easy-to-use software program that operates on the widely-employed Windows® environment.

### **How it works**

Undoubtedly one of the most useful attributes of Edgecut is for the user to have real-time data presented graphically, 'as it is happening', on the machine itself. Real-time

3D representation of a job and the ability to rotate, pan and move around at will, gives unprecedented freedom to the operator to know what is going on at any time. Alternatively the built-in automatic tool-following function can be left running, should the operator merely need to keep an eye on things while engaged on other tasks.

Many waterjet users have to run a succession of small batch tasks and even one-offs, for which purpose the ability to set up a simple outline program and then monitor it and add or amend instructions as the job progresses, will make their lives a lot easier. This is where Edgecut excels. The process taking place on the machine can be viewed remotely at all times and in real time, with changes to tool radius compensation just the press of a button away, with movements, feeds and tool alignment all clearly displayed.

### **Instant decisions**

Each job in "Edgecut" effectively consists of a set of drawings, each drawing in turn might comprise of a number of parts.

The operator can decide every single detail of the job as it is displayed. On one of the screens available, full control over the cutting heads can be exercised, including when to turn them on and off, how the abrasive feeders should work, plus fine-tuning of the height sensors and much more.

### **Setting up**

Each drawing can be set up for a multiplicity of parts to be profiled per sheet and then repeated as many times as required using individual settings for the zero points, distance between parts and so on.

It is delightfully easy to set up these zero points and there are direct access buttons for reading current axes positions and a crisp, clear, view of what's going on and what lies ahead, making it almost impossible for mistakes to occur.

### **Welcome addition**

Edgecut is clearly going to be a welcome addition to the practical tools available to WJS machine operators now and in the future. It can now be specified for any new WJS machine and retrofitted on existing installations.

- END -

### **Editor's note**

The first Water Jet Sweden AB plant built only 14 years ago at Ronneby, Sweden, has established itself as the leading source worldwide of the ultimate in accuracy in water jet cutting technology and the construction and supply of the much larger waterjet cutting machines, hence its rapid growth to a supplier of standard and custom-built machines around the world, including Russia and China

The company has doubled its output capacity and floor area with the start-up in November 2006 of a newly-built, second plant and Showroom on the Ronneby site in southern Sweden. Production of the new plant will even exceed that of the pre-existing plant as a result of the introduction of new, more advanced manufacturing technology.

In Europe, in addition to the long-established Water Jet sister company in Germany, WATER JET Wasserstrahl Schneidetechnik GmbH in Neustadt, there are subsidiary companies now established in the UK, WJS UK Ltd; and in Poland, Water Jet Polska.

**THE TEXT OF THIS RELEASE AND HIGH-RESOLUTION PHOTOGRAPHS CAN BE TAKEN FROM THE DISC ENCLOSED OR ON REQUEST.**

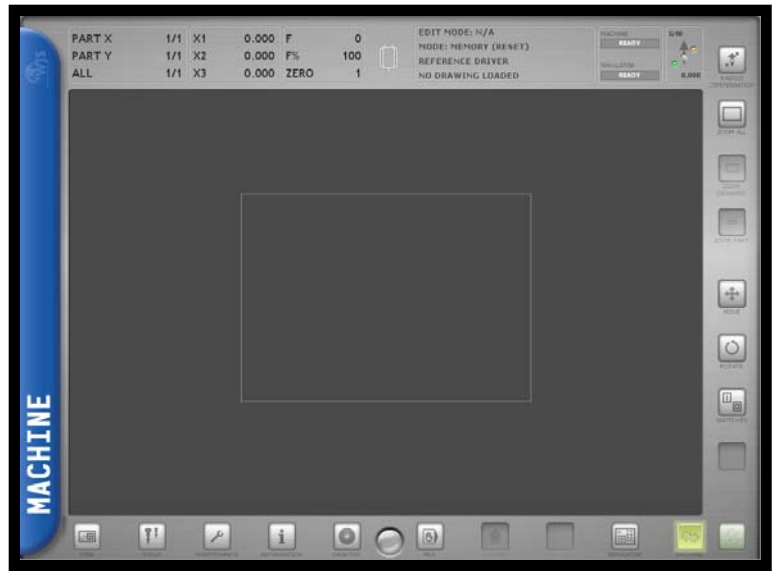
### **For further information:**

Lennart Svensson  
Managing Director  
Water Jet Sweden AB  
Teknikvägen 4  
372 38 Ronneby  
Sweden  
Tel: +46 457 45 54 40  
Fax: +46 457 192 01  
e-mail: [waterjet@waterjet.se](mailto:waterjet@waterjet.se)  
website: [www.waterjetSweden.eu](http://www.waterjetSweden.eu)

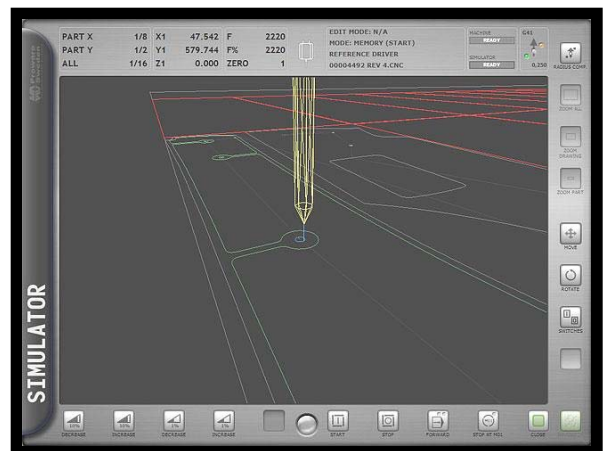
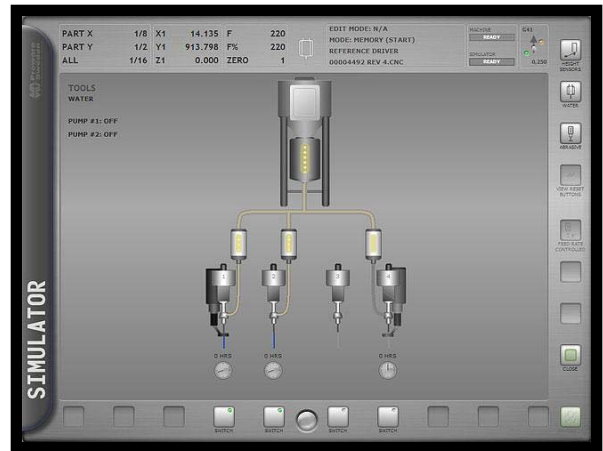
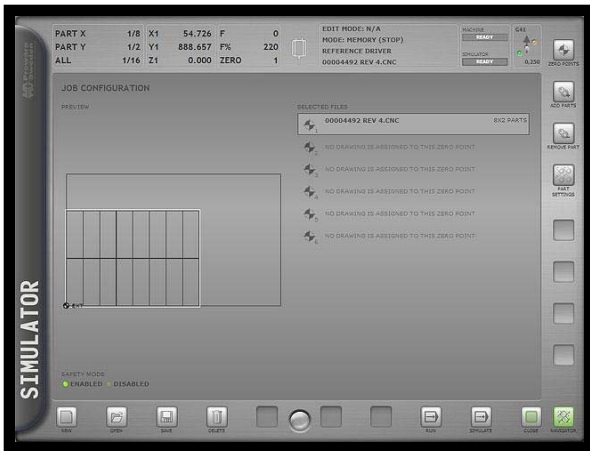
### **Issued by and press contact:**

Tom Moriarty  
Thomas Moriarty International Ltd  
Springwood House,  
Ringshall  
Berkhamsted  
Herts. HP4 1ND  
Tel: +44 (0) 1442 843000  
Fax: +44 (0) 1442 843666  
e-mail: [tom@thomas-moriarty.com](mailto:tom@thomas-moriarty.com)  
website: [www.thomas-moriarty.com](http://www.thomas-moriarty.com)

### PHOTOGRAPHS CONTAINED ON CD ATTACHED



*Water Jet Sweden's "Edgecut" newly-developed software system*



***"Edgecut" incorporates a host of features including: real-time three-dimensional screen viewing, job management, built-in multipart capabilities, live updates of alarms and operational messages, all with direct feedback from the machine.***